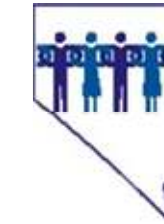
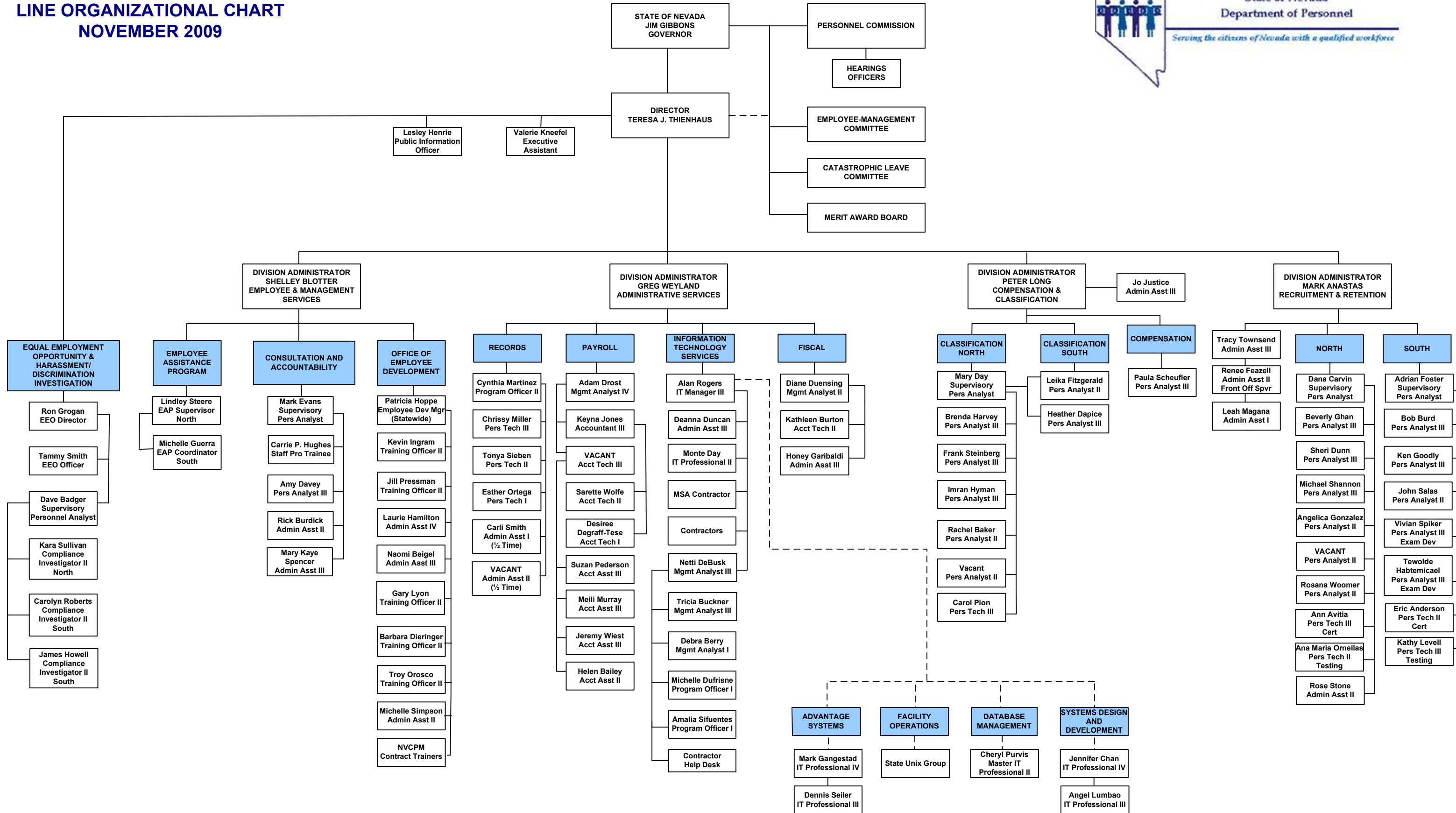


**STATE OF NEVADA
DEPARTMENT OF PERSONNEL
LINE ORGANIZATIONAL CHART
NOVEMBER 2009**



State of Nevada
Department of Personnel
Serving the citizens of Nevada with a qualified workforce



Blue Boxes indicate program areas
----- (Indirect/Shared Supervision/Coordination)